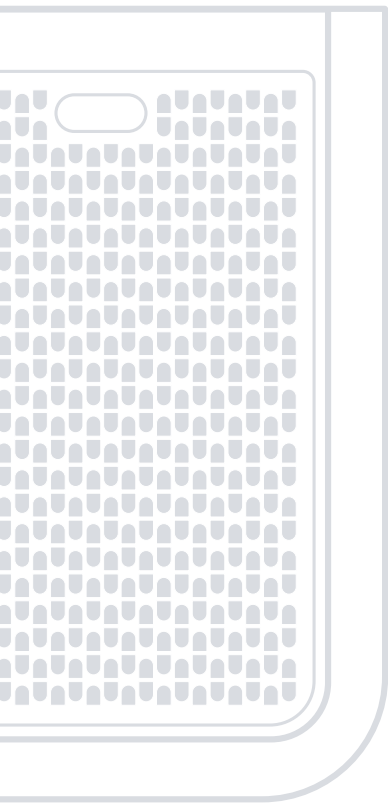


MOVINCOOL®

The #1 Spot Cooling Solution

MovinCool Specification & Accessory Catalog



Another line of quality products by DENSO.

DENSO

The All-New Climate Pro Series Advances Spot-cooling Technology.

The best just got better with three all-new product series:

Climate Pro K – for offices and computer rooms

Climate Pro X – for industrial and warehouse applications

Climate Pro D – dual capabilities for heating and cooling

Improved performance with these new features:

- Color LCD control panel. Simplifies operation, clearing of codes and easier to read.
- Matte black cabinet brings stylish utility to the workplace.
- Added bumpers enable safer handling and movement around your facility.
- Larger casters makes rolling and navigation easier.
- Built-in cable compartment. Keeps power cord securely out of the way.

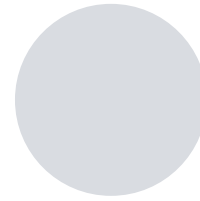
Other design advances:

- Quick-connect nozzle. Turn-and-click convenience for efficient direction of air-flow (select Climate Pro X series models).
- Hinged tank cover. Keeps drain tank secure.
- Ergonomic drain tank design. Makes for easier handling and emptying.
- Built-in flanges. Standard on all models — no add-ons needed.

Connectivity ready* with remote monitoring features:

- 24/7 monitoring for “no surprises.”
- Receive system notifications.
- Get on-demand location updates for asset tracking.

*Subscription required, coming in 2022.



Climate Pro K Series

Made especially for commercial/office spaces where comfort is essential to productivity.



Climate Pro X Series

Spot cooling for commercial/office applications — perfect for cooling people and production processes.



Climate Pro D Series

Our heat pumps are your answer for cooling and heating for year-round comfort.



Industry-Leading Quality and Innovation Since 1982

MovinCool is your number one source for portable cooling systems. You'll find the industry's finest and most extensive line of products, known for innovation, reliability, and overall value. MovinCool pioneered the portable cooling industry in 1982. We continue to lead by providing the most advanced products on the market. For offices, factories, warehouses and any commercial space — MovinCool brings proven performance for trouble-free spot cooling.

The "Performance Difference"

Innovation. Our advances in portable cooling technology include the first programmable systems and the first ceiling-mount units for space-limited installations. Now MovinCool brings you the first and only connectivity-ready portable cooling systems.

Reliability. DENSO design standards ensure that MovinCool systems live up to your expectations for durable reliability. Every model undergoes rigorous tests in the design phase including three-axis vibration, thermal shock under extreme temperature cycling, and exposure to eight different kinds of dust particulates.

Value. MovinCool products provide the best total cost of ownership, typical life cycles exceeding 10 years, and manufacturing quality approximating "zero defects."

Our commitments to quality, innovation and service combine to give you the best return on investment — the reason MovinCool is known worldwide as "the #1 portable spot cooling solution."

As a brand of DENSO Corporation, MovinCool is aligned with the world's largest manufacturer of air conditioning systems and the primary supplier to the automotive industry.

DENSO is headquartered in Japan and has more than 200 subsidiaries and affiliates worldwide. It employs over 170,000 people in the manufacture and distribution of advanced automotive systems and components, robotics, telecommunications products, and information-processing devices.



Nick Orr

LITTLE COMPANY OF MARY HOSPITAL

"When the laboratory was first built, the air conditioning was more than adequate. However, over the years a lot of new electronic equipment that produces a lot of heat has been added. We brought in two MovinCool portable air conditioner systems, plugged them in, ran the ductwork to the ceiling. Within minutes we had cool air and everything was running smoothly and efficiently."

Michael Franks

SWEETHEART CUP COMPANY, INC.

"We used MovinCool out on our production lines for our thermal forming areas where it's very hot. We put a MovinCool spot cooler right on the packing areas and distributed them onto people. It cooled down the area so we didn't have to be moving out every other time and shifting people to cool down."



MOVINCOOL®

Leading the industry we created.

MovinCool pioneered the portable cooling industry in 1982. We continue to lead by providing you with the most advanced products on the market. For offices, schools, factories, warehouses and any commercial space — MovinCool brings proven performance for trouble-free spot cooling.



Computer and Server Room

Protect valuable electronics with MovinCool reliability.

Dependable spot cooling.

The MovinCool Climate Pro series provides dependable spot cooling for your high-value electronics — computers, servers, and telecom equipment while preventing equipment failures and communication outages. It can be used for your emergency backup, supplement, or permanent cooling.



Offices and Schools

Think cool. Think MovinCool.

Keeping people cool and productive.

MovinCool is instant relief from excessive heat in offices and schools to keep people thinking clearly and working productively. It helps keep computers from overheating, provides cooling just where it's needed and emergency cooling when central systems fail.



Healthcare Facilities

Spot cooling solutions that serve you well.

Keeping your facilities running smoothly.

MovinCool controls temperatures around heat-generating medical equipment to keep your healthcare facility running smoothly when main HVAC systems are down. Use it for temporary cooling in emergency rooms, waiting areas and energy-intensive areas, such as labs, imaging centers, and computer rooms.

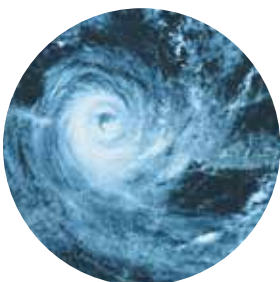


Industry and Manufacturing

When heat is rough on production, MovinCool smooths things out.

Production that runs smoothly.

MovinCool portable spot air conditioners can be used without the huge expense of air conditioning an entire facility and prevent product defects (warping and condensation) due to heat and humidity. It reduces risks of human error and worker disability from heat exhaustion while supporting the work quality and productivity.



Emergency Back-up

Roll it in. Set it up. Turn it on.

Back-up cooling when you need it the most.

MovinCool units provide true air-conditioning on casters that can be quickly deployed in a variety of emergency situations such as, heat waves, flooding, and natural disasters. Reduce heat stress on equipment and people to keep critical operations up and running and can run from a generator during a power outage.



Outdoors and Events

No need to cancel your plans. Simply go with MovinCool.

Outdoor Cooling

MovinCool units can simply be rolled out, set up, and turned on providing cold air to protect staff and participants from heat stress. The Climate Pro X Series models offer 13,200 to 24,000 Btu/h of spot cooling and the Classic Series models offer 39,000 to 60,000 Btu/h and are ETL listed for outdoor use and more extreme conditions like strong sunlight and high humidity.



Moisture Removal

MovinCool dehumidifiers are ideal for drying out wet and damp spaces.

Count on MovinCool drying technology for swift and sure moisture removal.

MovinCool portable spot air conditioners are ideal for drying out wet and damp spaces in emergency situations such as storms, floods, spills and leaks. It extracts moisture quickly, saving time and reducing restoration costs. It eliminates odors and prevents growth or spread of mold and mildew.



Automotive Service Bay

When the garage gets hot, MovinCool says, "No Sweat."

Work comfortably

MovinCool portable spot air conditioners help those in automotive service bays or on the race track avoid heat stress and increase productivity. It cools employees in hot and humid service bays while reducing fatigue, injury and heat stress. It also cools hot engines and other equipment — cutting downtime.



Construction Sites

Drying and Cooling Solution at the Jobsite.

Quick relief

MovinCool portable spot air conditioners speed up drying and curing of construction materials such as drywall, compound, grout, caulking, paints, and adhesives. It keeps workers cool in heat-intensive work processes, such as welding or while in trailers, tents, temporary offices or when central HVAC is down or off.



Safety in the Workplace

Prevent heat and stress while increasing productivity.

Keeping workers safe on jobsites.

When jobsite heat becomes unbearable, MovinCool spot air conditioners provides quick relief to workers avoiding heat stress, potential OSHA citations, and increasing productivity. It cools down heat-sensitive equipment preventing production downtime and is ideal for supplemental, emergency or permanent cooling.



Spot Cooling Solutions with MovinCool Accessories

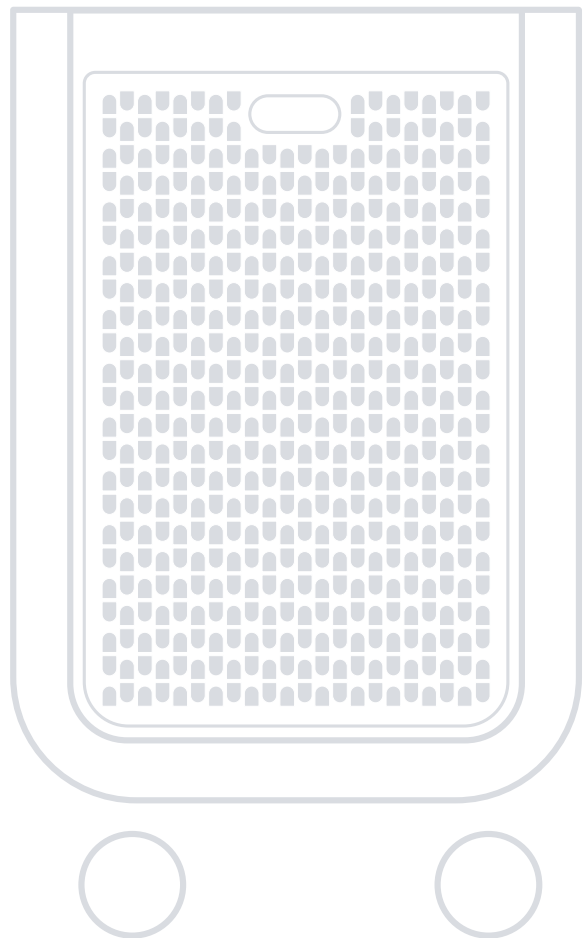
The all-in-one design of MovinCool portable air conditioners and heat pumps make them the ideal cooling and heating solution for your climate-control needs. Using the optional accessories not only gives you the ability to customize cooling and heating applications, but also makes the unit work more efficiently.

We've grouped the accessories into the most common applications such as cooling multiple areas with one unit, automatically removing condensation and removing exhaust air. The possibilities are endless. And with genuine MovinCool accessories, you are assured of quality parts engineered and designed specifically to gain optimum performance from your MovinCool products.

How to Select MovinCool Accessories

The most common accessory installations are included in this catalog.

- 1.** Find your MovinCool model series:
Climate Pro, Classic or CM.
- 2.** Find the application(s) suited to your specific need.
- 3.** Order the part number(s) for your specific MovinCool model.



Climate Pro K Series

The cooler choice for your office or computer room

The all-new Climate Pro K series brings “roll-it-in” and “plug-it-in” convenience with the innovative features that distinguish the entire Climate Pro line.

Key Features

- Made especially for commercial spaces where comfort is essential to productivity.
- Cools to mid-60s°F — for effective heat control around electronics, servers, and computers.
- Air-cooled models from 12,000 to 60,000 Btu/h — let you size efficiently for your space.
- Digital controls and auto operation — allow 24/7 programmable back-up of central systems.
- Effective moisture removal — hastens drying for humid and water-damaged areas.
- Connectivity ready with remote monitoring, geolocation and performance notifications.*

*Subscription required, coming in 2022.



Ideal for . . .

Offices
Server and Telecom Rooms
Hospitals
Schools
Laboratories
Banks
Emergency Back-up
Supplemental Cooling
After-hours Cooling
Retail Spaces



Climate Pro K Series Specifications

		K12	K18	K24
Electronic Features	Control Panel	Programmable	Programmable	Programmable
Cooling Capacity	Rating Conditions: 95°F @ 60% RH	12,000 Btu/h	16,800 Btu/h	24,000 Btu/h*
Electrical Characteristics	Voltage Requirement (60 Hz)	1 Phase, 115 V	1 Phase, 115 V	1 Phase, 208/230 V
	Total Power Consumption	1.2 kW	1.7 kW	2.9 kW*
	Current Consumption	10.3 amps	14.5 amps	12.5 amps*
	Recommended Fuse Size	15 amps	20 amps	20 amps
	NEMA Plug Configuration	5-15P	5-20P	6-20P
	Min. - Max. Voltage	104 - 127 V	104 - 127 V	198 - 253 V
Fans	Motor Output	0.23 kW	0.23 kW	0.56 kW*
Evaporator	Fan Type	Centrifugal	Centrifugal	Centrifugal
	Max. Air Flow - High/Mid/Low	410/380/330 CFM	540/500/440 CFM	650/600/530 CFM
	Max. External Static Pressure	0.31 IWG	0.31 IWG	0.51 IWG
Condenser	Fan Type	Centrifugal	Centrifugal	Centrifugal
	Max. Air Flow - High/Mid/Low	760/700/640 CFM	770/710/630 CFM	870/760/740 CFM
	Max. External Static Pressure	0.16 IWG	0.23 IWG	0.16 IWG
Compressor	Type	Hermetic Rotary	Hermetic Rotary	Hermetic Rotary
	Output	0.75 kW	0.9 kW	1.5 kW*
Refrigerant	Type	R-410A	R-410A	R-410A
Dimensions	W x D x H	22 x 27 x 47 in	22 x 27 x 47 in	22 x 27 x 51 in
Net Weight/Shipping Weight		166/208 lb	172/229 lb	205/282 lb
Power Cord	Gauge	14 AWG (3-core)	12 AWG (3-core)	12 AWG (3-core)
	Length	10 ft	10 ft	6 ft
Condensate Tank Capacity		5 gal	5 gal	5 gal
Operating Conditions	Min. - Max. @ 50% RH	65° - 95°F	65° - 95°F	65° - 95°F
Max. Duct Length	Per Cold Duct Hose	30 ft	25 ft	50 ft
	Hot Duct Hose	60 ft	60 ft	45 ft
Max. Sound Level	With Condenser Duct - High/Mid/Low	59/57/53 dB(A)	63/61/59 dB(A)	66/64/61 dB(A)
	Without Condenser Duct - High/Mid/Low	61/59/55 dB(A)	65/63/60 dB(A)	68/66/63 dB(A)

*Specifications information shown with 230 V.

All specifications subject to change without notice. See page 31 for technical features and warranty information.

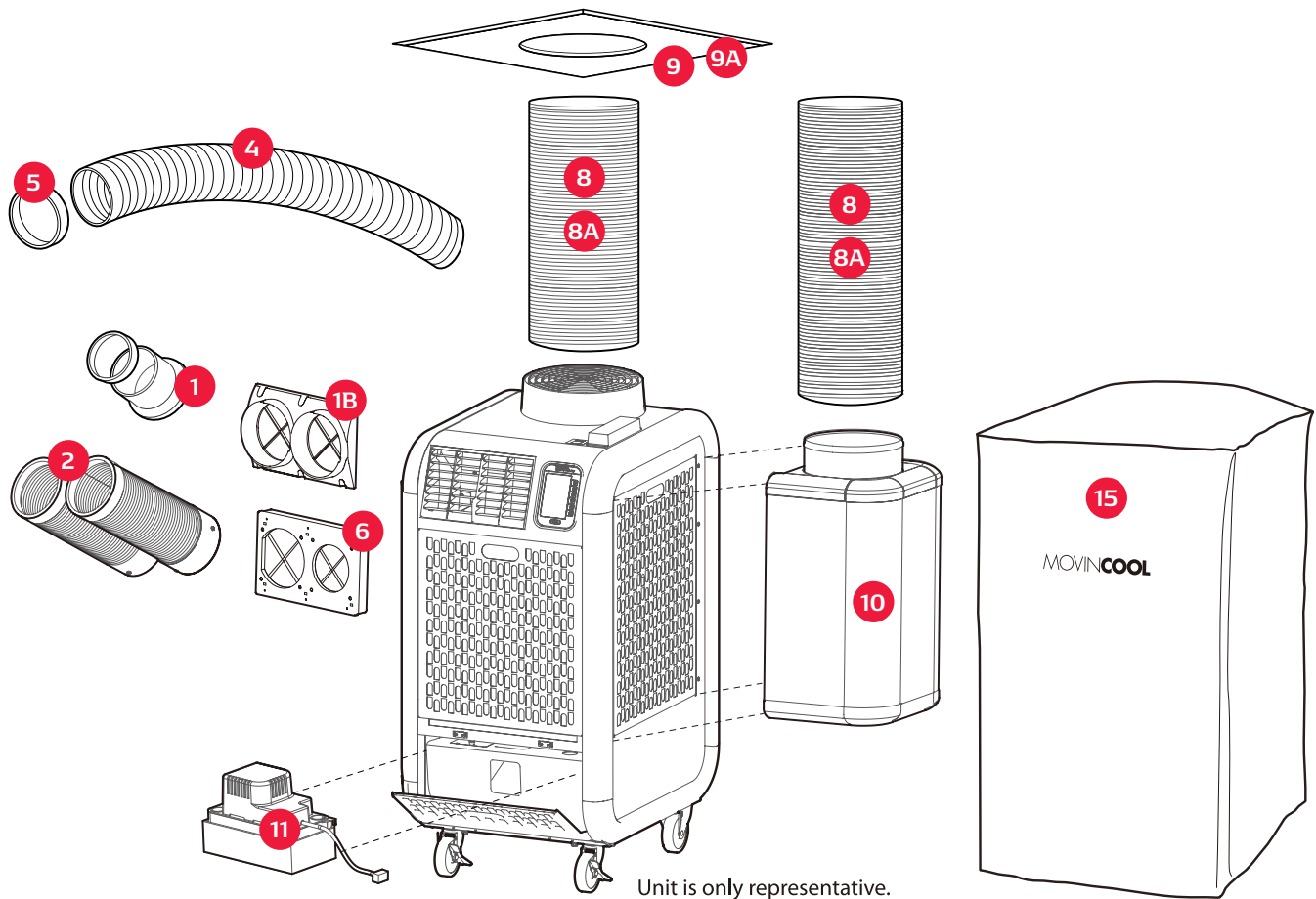


Climate Pro K Series Specifications

		K36	K60	K63
Electronic Features	Control Panel	Programmable	Programmable	Programmable
Cooling Capacity	Rating Conditions: 95°F @ 60% RH	36,000 Btu/h*	60,000 Btu/h*	60,000 Btu/h
Electrical Characteristics	Voltage Requirement (60 Hz)	1 Phase, 208/230 V	1 Phase, 208/230 V	3 Phase, 460 V
	Total Power Consumption	4.3 kW*	6.6 kW*	6.6 kW
	Current Consumption	19.9 amps*	31.5 amps*	12.2 amps
	Recommended Fuse Size	30 amps	50 amps	20 amps
	NEMA Plug Configuration	6-30P	6-50P	L16 - 20
	Min. - Max. Voltage	198 - 253 V	198 - 253 V	440 - 480 V
Fans	Motor Output	0.23 kW Evaporator 0.37 kW Condenser	0.56 kW Evaporator 0.30 kW x 2 Condensers	0.56 kW Evaporator 0.30 kW x 2 Condensers
Evaporator	Fan Type	Centrifugal	Centrifugal	Centrifugal
	Max. Air Flow - High/Mid/Low	920/880/840 CFM	1770/1710/1650 CFM	1770/1710/1650 CFM
	Max. External Static Pressure	0.6 IWG	0.9 IWG	0.9 IWG
Condenser	Fan Type	Centrifugal	Centrifugal	Centrifugal
	Max. Air Flow - High/Mid/Low	1390/990 CFM	2400 CFM	2400 CFM
	Max. External Static Pressure	0.5 IWG	0.85 IWG	0.85 IWG
Compressor	Type	Hermetic Scroll	Hermetic Rotary	Hermetic Scroll
	Output	2.3 kW	3.45 kW	3.45 kW
Refrigerant	Type	R-410A	R-410A	R-410A
Dimensions	W x D x H	31 x 55 x 53 in	31 x 55 x 64 in	31 x 55 x 64 in
Net Weight/Shipping Weight		454/570 lb	582/683 lb	659/741 lb
Power Cord	Gauge	12 AWG (3-core)	6 AWG (3-core)	12 AWG (3-core)
	Length	6 ft	6 ft	6 ft
Condensate Tank Capacity		2 @ 5 gal	Auto Pump Included	Auto Pump Included
Operating Conditions	Min. - Max. @ 50% RH	65° - 95°F	65° - 105°F	65° - 105°F
Max. Duct Length	Per Cold Duct Hose	40 ft	40 ft	40 ft
	Hot Duct Hose	60 ft	100 ft	100 ft
Max. Sound Level	With Condenser Duct - High/Mid/Low	68/67/66 dB(A)	69/68/67 dB(A)	69/68/67 dB(A)
	Without Condenser Duct - High/Mid/Low	70/69/68 dB(A)	71/70/69 dB(A)	71/70/69 dB(A)

*Specifications information shown with 230 V.

All specifications subject to change without notice. See our website for the latest information. See page 31 for technical features and warranty information.



Climate Pro K12 / K18 / K24

#	ACCESSORY	DESCRIPTION
1	Supply Air Flange Kit, 5-in dia.	Black metal flange with wire clamp and mounting screws. Use with self-supported ducts.
1B	Quick Connect Supply Air Flange Kit, 5-in dia.	Black plastic flange with mounting screws. Use with Quick Connect Nozzle Kit.
2	Quick Connect Supply Air Nozzle Kit, 5-in dia.	Gray plastic nozzle that extends up to 2 feet in length. Includes trim ring. Each nozzle sold separately.
4	Self-Supported Duct, 5-in dia.	White plastic duct with adjustable diameter that extends from 6.5 to 10 feet in length.
5	Trim Ring, 5-in dia.	Black plastic ring mounts as end caps for extension duct.
6	Supply Air Nozzle Adapter Kit, 5-in dia.	Adapter converts airflow from louvers to nozzles or air ducts. Two nozzles or extension ducts.
8	Self-Supported Duct, 12-in dia.	Gray plastic duct that extends 6.5 to 10 feet in length.
8A	Flexible Air Duct, 12-in dia. (not shown)	Wire-reinforced, accordion-style duct in 25-ft lengths. Includes clamp.
9	Celling Tile, 12-in dia hole, plastic	24-in x 24-in white plastic tile with 12-in hole for exhaust air self-supported duct.
9A	Celling Tile, 12-in hole, metal (not shown)	24-in x 24-in sheet metal tile with 12-in hole and built-in flange for exhaust air flexible duct.
10	Outdoor Heat Exchanger Plenum	Plenum for return air to outdoor heat exchanger.
11	Condensate Pump Kit	Pump kit includes 3/8-in diameter x 20-ft length hose. Includes installation hardware. Maximum lift: 20 feet at 115V and 17 feet at 230V.
15	Storage Cover	Durable black nylon oxford unit storage cover.

Accessory Applications

Auto Condensate Removal

Why bother with emptying the drain tank when you can install a condensate pump to remove the water automatically? This pump has a 17-ft lift capacity to reach virtually any remote drain.

#	ACCESSORY	CLIMATE PRO K12 / K18	CLIMATE PRO K24
11	Condensate Pump Kit	484789-0210	484789-0220

Outdoor Heat Exchanger Exhaust Air Removal

MovinCool makes removing exhaust easy. Replace the existing ceiling tile with the MovinCool ceiling tile accessory. Place the self-supported or flexible duct on top of the unit and insert it into the ceiling tile.

#	ACCESSORY	CLIMATE PRO K12 / K18 / 24
8	Self-Supported Duct, 12-in dia. ^(a)	LA481744-0410
8A	Flexible Air Duct (not shown) ^(b)	LAY45771-0060
9	Ceiling Tile, plastic ^(c)	LA146373-8280
9A	Ceiling Tile, metal (not shown) ^(d)	484490-1030

Outdoor Heat Exchanger Air Intake

When balanced airflow is required, attach the outdoor heat exchanger plenum with a duct from the side of the unit to an outside air source. The air to the outdoor heat exchanger is pulled from outside the room to eliminate problems associated with negative air pressure.

#	ACCESSORY	CLIMATE PRO K12 / K18	CLIMATE PRO K24
8	Self-Supported Duct, 12-in dia. ^(e)	LA481744-0410	LA481744-0410
8A	Flexible Air Duct (not shown) ^(f)	LAY45771-0060	LAY45771-0060
9	Ceiling Tile, plastic ^(g)	LA146373-8280	LA146373-8280
9A	Ceiling Tile, metal (not shown) ^(h)	484490-1030	484490-1030
10	Outdoor Heat Exchanger Plenum ⁽ⁱ⁾	484350-1160	484350-1170

Spot or Remote Cooling

To use the Climate Pro® K Series models to spot cool specific areas, use the nozzle adapter in place of the standard louvers. Attach self-supported or flexible air ducts to the adapter to cool remote hot spots. Trim rings give a finished look and keep the ducts from unraveling. To improve efficiency, use the outdoor heat exchanger plenum to recirculate cool air.

#	ACCESSORY	CLIMATE PRO K12 / K18 / K24
1	Supply Air Flange Kit ^(j)	481170-0450
1B	Quick Connect Supply Air Flange Kit ^(k)	481170-0480
2	Quick Connect Supply Air Nozzle Kit ^(l)	484209-0480
4	Self-Supported Duct, 5-in dia. ^(m)	481744-0090
5	Trim Ring ⁽ⁿ⁾	481851-0200
6	Supply Air Nozzle Adapter Kit ^(o)	481769-0280

Unit Storage

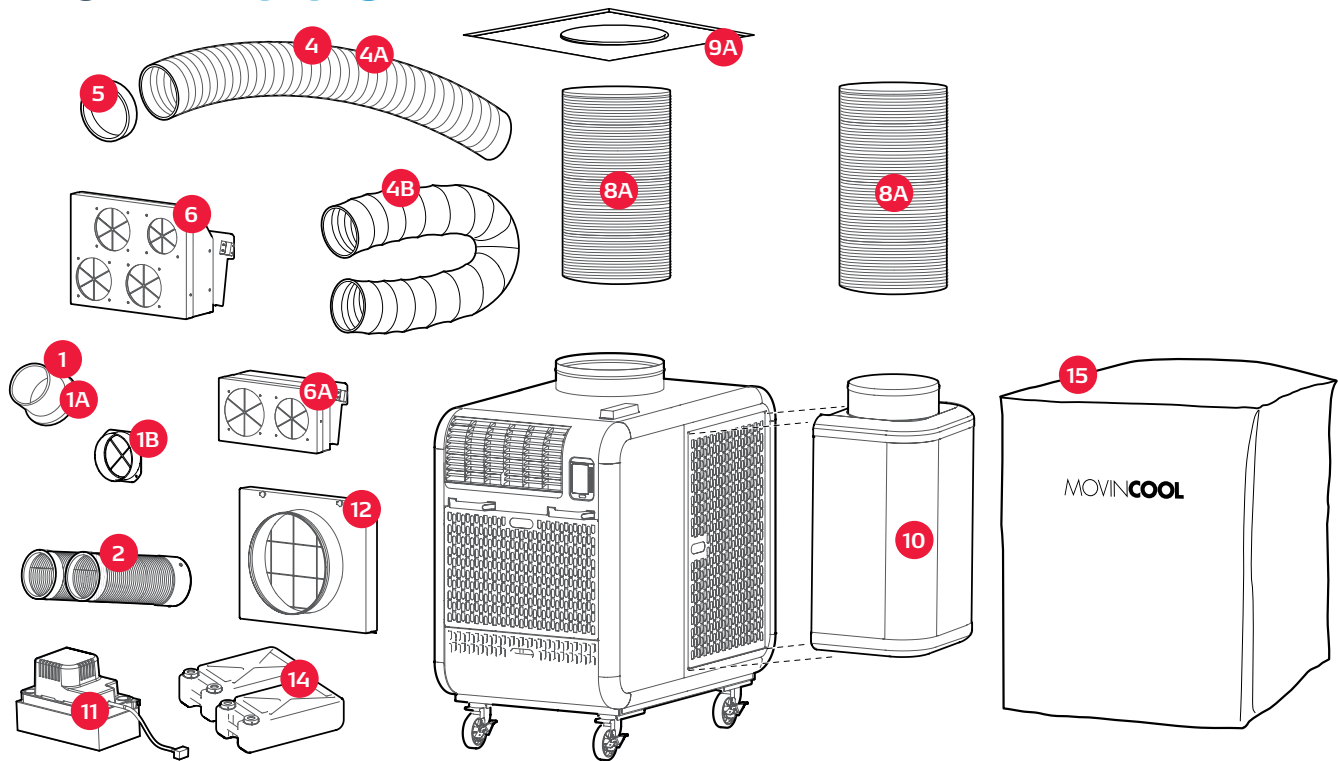
This durable unit cover is perfect for storage and transportation on an open truck. Made of black nylon oxford fabric, this cover is waterproof and mildew- and UV-treated for lasting service.

#	ACCESSORY	CLIMATE PRO K12 / K18	CLIMATE PRO K24
15	Storage Cover	LA484420-0840	LAY84420-0690

REQUIRED ACCESSORIES:

- | | | | | |
|--------|---------------|------------------|----------------|-------------------|
| (a) 9 | (e) 9 and 10 | (i) (8 and 9) or | (l) 1B and 6 | (o) (1B and 2) or |
| (b) 9A | (f) 9A and 10 | (8A and 9A) | (m) 1, 5 and 6 | (1, 4 and 5) |
| (c) 8 | (g) 8 and 10 | (j) 4, 5 and 6 | (n) 4 | |
| (d) 8A | (h) 8A and 10 | (k) 2 and 6 | | |

NOTE: All part numbers come with one part except where noted. All kits include additional pieces such as clamps and screws. See parts description box for more information.



Climate Pro K36 / K60 / K63

#	ACCESSORY	DESCRIPTION
1	Supply Air Flange Kit, 6-in dia.	Black metal flange with wire clamp and mounting screws. Use with Self-Supported Duct.
1A	Supply Air Flange Kit, 8-in dia	Black metal flange with wire clamp and mounting screws. Use with Self-Supported or Flexible air ducts.
1B	Quick Connect Supply Air Flange Kit, 6-in dia.	Black metal flange with mounting screws. Use with Quick Connect Nozzle Kit.
2	Quick Connect Supply Air Nozzle Kit, 6-in dia.	Gray plastic nozzle that extends up to 2 feet in length. Includes trim ring. Each nozzle sold separately.
4	Self-Supported Duct, 6-in dia.	White plastic duct with adjustable diameter that extends from 6.5 to 10 feet in length.
4A	Self-Supported Duct, 8-in dia.	Plastic duct with adjustable diameter that extends from 6.5 to 10 feet in length.
4B	Flexible Air Duct, 8-in dia.	Wire-reinforced, accordion-style duct in 25-ft lengths. Includes clamp.
5	Trim Ring, 6-in dia.	Black plastic ring mounts as end caps for extension duct.
6	Supply Air Nozzle Adapter Kit, 6-in dia.	Adapter converts airflow from louvers to nozzles or air ducts. Two, three or four nozzles or air ducts configurations.
6A	Duct Adapter Kit, 8-in dia.	Two-piece metal frame converts airflow from louvers to 8-in self-supported ducts or flexible air ducts. Ducts and flange sold separately.
8A	Flexible Air Duct, 16-in dia. (not shown)	Wire-reinforced, accordion-style duct in 25-ft lengths. Includes clamp.
9A	Celling Tile, 16-in hole, metal (not shown)	24-in x 24-in sheet metal tile with 16-in hole and built-in flange for exhaust air flexible duct kit.
10	Outdoor Heat Exchanger Plenum	Plenum for return air to outdoor heat exchanger.
11	Condensate Pump Kit, 230V	Pump kit includes 3/8-in diameter x 20-ft length hose. Includes installation hardware. Maximum lift: 17 feet
12	Indoor Heat Exchanger Plenum	Plenum for return air to indoor heat exchanger.
14	Condensate Tank	Drain tank storage for condensation. Requires condensate float, sold separately. (For Climate Pro K60/K63 only)
14A	Condensate Float (not shown)	Controls water level in condensate tanks. (For Climate Pro K60/K63 only)
15	Storage Cover	Durable black nylon oxford unit storage cover.

Accessory Applications

Auto Condensate Removal

Why bother with emptying the drain tank when you can install a condensate pump to remove the water automatically? This pump has a 17-ft lift capacity to reach virtually any remote drain. (Use of condensate tanks also requires the float).

#	ACCESSORY	CLIMATE PRO K36	CLIMATE PRO K60 / K63
11	Condensate Pump Kit	484789-0240	Included
14	Condensate Tank	Included	484730-0020
14A	Condensate Float (not shown)	Included	484460-0010

Outdoor Heat Exchanger Exhaust Air Removal

MovinCool makes removing exhaust easy. Replace the existing ceiling tile with the MovinCool ceiling tile accessory. Place the self-supported or flexible duct on top of the unit and insert it into the ceiling tile (8A and 9A required).

#	ACCESSORY	CLIMATE PRO K36 / K60 / K63
8A	Flexible Air Duct (not shown)	LAY45820-0010
9A	Ceiling Tile, metal (not shown)	484490-1040

Outdoor Heat Exchanger Air Intake

When balanced airflow is required, attach the outdoor heat exchanger plenum with a duct from the side of the unit to an outside air source. The air to the outdoor heat exchanger is pulled from outside the room to eliminate problems associated with negative air pressure. (8A, 9A and 10 required).

#	ACCESSORY	CLIMATE PRO K36	CLIMATE PRO K60 / K63
8A	Flexible Air Duct, 16-in dia. (not shown)	LAY45820-0010	LAY45820-0010
9A	Ceiling Tile, metal (not shown)	484490-1040	484490-1040
10	Outdoor Heat Exchanger Plenum	484350-1230	484350-1240

Spot or Remote Cooling

To use the Climate Pro K Series models to spot cool specific areas, use the nozzle adapter in place of the standard louvers. Attach self-supported or flexible air ducts to the adapter to cool remote hot spots. Trim rings give a finished look and keep the ducts from unraveling. To improve efficiency, use the outdoor heat exchanger plenum to recirculate cool air.

#	ACCESSORY	CLIMATE PRO K36	CLIMATE PRO K60 / K63
1	Supply Air Flange Kit, 6-in dia. ^(a)	481170-0460	481170-0460
1A	Supply Air Flange Kit, 8-in dia. ^(b)	481170-0470	481170-0470
1B	Quick Connect Supply Air Flange Kit, 6-in dia. ^(c)	481170-0490	481170-0490
2	Quick Connect Supply Air Nozzle Kit, 6-in dia. ^(d)	484209-0490	484209-0490
4	Self-Supported Duct, 6-in dia. ^(e)	481744-0030	481744-0030
4A	Self-Supported Duct, 8-in dia. ^(f)	LA481744-0430	LA481744-0430
4B	Flexible Air Duct, 8-in dia. ^(f)	LAY45810-0030	LAY45810-0030
5	Trim Ring ^(g)	481851-0210	481851-0210
6	Supply Air Nozzle Adapter Kit, 6-in ^(h)	481769-0290	481769-0290
6A	Duct Adapter Kit, 8-in dia. ⁽ⁱ⁾	481769-0300	481769-0300
8A	Flexible Air Duct (not shown) ^(j)	LAY45820-0010	LAY45820-0010
12	Indoor Heat Exchanger Plenum ^(k)	484350-1330	484350-1210

Unit Storage

This durable unit cover is perfect for storage and transportation on an open truck. Made of black nylon oxford fabric, this cover is waterproof and mildew- and UV-treated for lasting service.

#	ACCESSORY	CLIMATE PRO K36	CLIMATE PRO K60 / K63
15	Storage Cover	LA484420-0850	LA484420-0860

REQUIRED ACCESSORIES:

- | | | | | |
|---|---------------------------|--------------------------|---|-------------------|
| ^(a) 4, 5 and 6 | ^(c) 2 and 6 | ^(f) 1A and 6A | ^(h) (1B and 2) or (1, 4 and 5) | ^(j) 12 |
| ^(b) (4A and 6A) or (4B and 6A) | ^(d) 1B and 6 | ^(g) 4 | ⁽ⁱ⁾ (1A and 4A) or (1A and 4B) | ^(k) 8A |
| | ^(e) 1, 5 and 6 | | | |

NOTE: All part numbers come with one part except where noted. All kits include additional pieces such as clamps and screws. See parts description box for more information.



Climate Pro X Series

The cooler choice for your warehouse or factory.

The all-new Climate Pro X Series brings advanced spot-cooling to commercial and industrial applications — perfect for cooling people and production processes.

Key Features

- Air-cooled units from 13,200 to 24,000 Btu/h — to handle temperatures as high as 113°F
- Three-speed fan and adjustable nozzles for versatile cooling comfort
- New! 115 V/20 amp model (16,800 Btu/h)
- Digital controls and auto operation — for 24/7 programmable back-up of central systems.
- Effective moisture removal — hastens drying for humid and water-damaged areas.
- Connectivity ready with remote monitoring, geolocation and performance notifications.*

*Subscription required, coming in 2022.



Ideal for . . .

Warehouses
Assembly Lines
Manufacturing Plants
Process Cooling
Construction Sites
Moisture Removal
Outdoors and Events

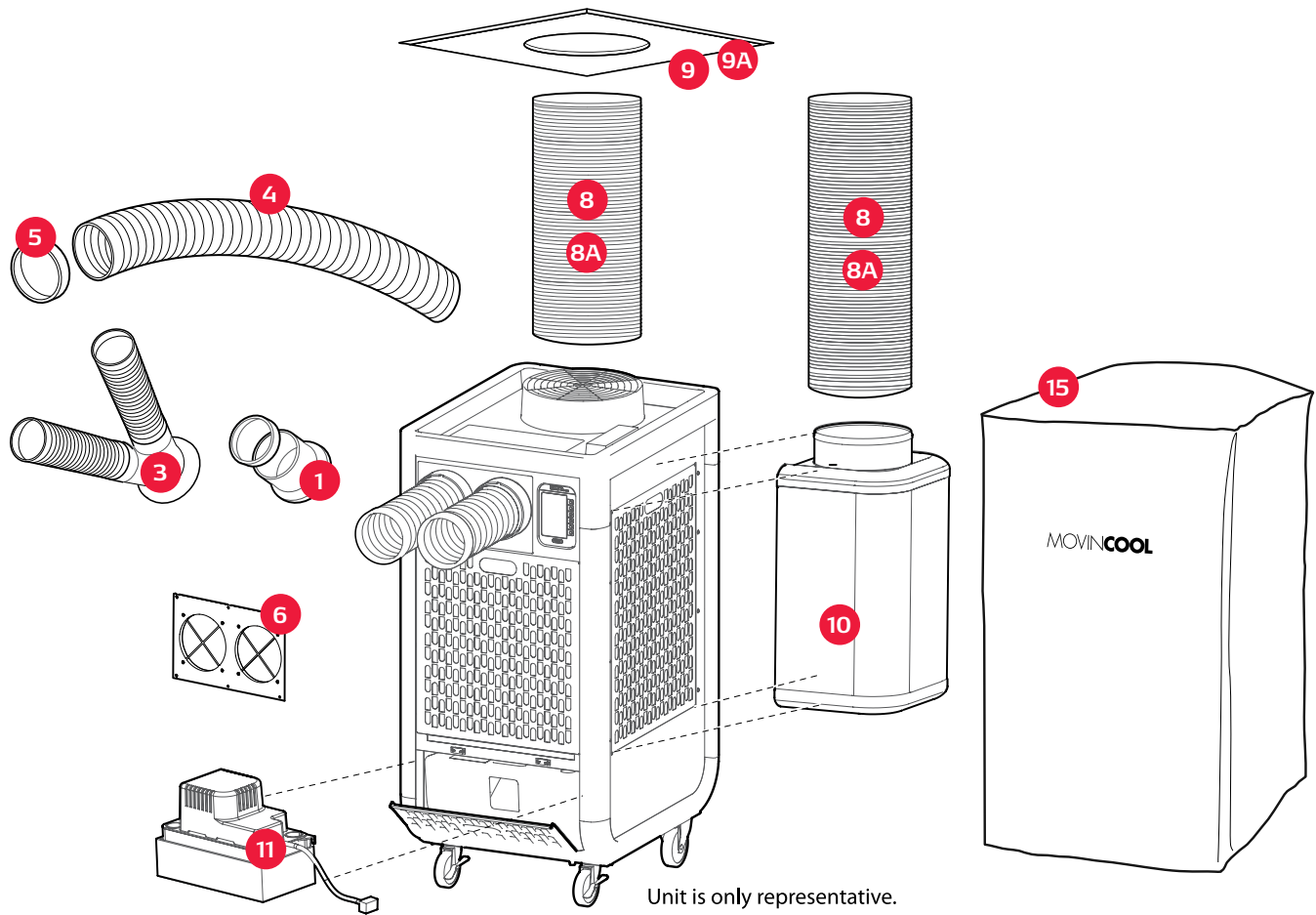


Climate Pro X Series Specifications

		X14	X20	X26
Electronic Features	Control Panel	Programmable	Programmable	Programmable
Cooling Capacity	Rating Conditions: 95°F @ 60% RH	13,200 Btu/h	16,800 Btu/h	24,000 Btu/h*
Electrical Characteristics	Voltage Requirement (60 Hz)	1 Phase, 115 V	1 Phase, 115 V	1 Phase, 208/230 V
	Total Power Consumption	1.3 kW	1.7 kW	2.7 kW*
	Current Consumption	11.5 amps	15.5 amps	12.8 amps*
	Recommended Fuse Size	15 amps	20 amps	20 amps
	NEMA Plug Configuration	5-15P	5-20P	6-20P
	Min. Max. Voltage	104 – 127 V	104 – 127 V	198 – 253 V
Fans	Motor Output	0.23 kW	0.37 kW	0.56 kW
Evaporator	Fan Type	Centrifugal	Centrifugal	Centrifugal
	Max Air Flow - High/Mid/Low	440/410/385 CFM	565/525/475 CFM	700/650/595 CFM
	Max External Static Pressure	0.31 IWG	0.31 IWG	0.42 IWG
Condenser	Fan Type	Centrifugal	Centrifugal	Centrifugal
	Max Air Flow - High/Mid/Low	830/770/720 CFM	890/835/760 CFM	1475/1370/1260 CFM
	Max External Static Pressure	0.19 IWG	0.23 IWG	0.25 IWG
Compressor	Type	Hermetic Rotary	Hermetic Rotary	Hermetic Rotary
	Output	0.75 kW	0.9 kW	1.5 kW
Refrigerant	Type	R-410A	R-410A	R-410A
Dimensions	W x D x H	22 x 29 x 48 in	22 x 29 x 51 in	22 x 29 x 51 in
Net Weight/Shipping Weight		165/212 lb	195/237 lb	216/292 lb
Power Cord	Gauge	14 AWG (3 -core)	12 AWG (3-core)	12 AWG (3-core)
	Length	10 ft	10 ft	6 ft
Condensate Tank Capacity		5 gal	5 gal	5 gal
Operating Conditions	Min. – Max. @ 50% RH	70° – 113°F	70° – 113°F	70° – 113°F
Max. Duct Length	Per Cold Duct Hose	30 ft	30 ft	60 ft
	Hot Duct Hose	60 ft	60 ft	45 ft
Max. Sound Level	With Condenser Duct - High/Mid/Low	57/56/55 dB(A)	64/63/62	66/65/64 dB(A)
	Without Condenser Duct - High/Mid/Low	60/59/58 dB(A)	67/66/65	69/68/67 dB(A)

*Specifications information shown with 230 V.

All specifications subject to change without notice. See our website for the latest information. See page 31 for technical features and warranty information.



Climate Pro X14 / X20 / X26

#	ACCESSORY	DESCRIPTION
1	Supply Air Flange Kit, 5-in dia.	Black metal flange with wire clamp and mounting screws. Use with supply air ducts.
3	Dual Duct, 5-in dia.	Plastic flange with two 4-in nozzles that extend to 2 feet in length
4	Self-Supported Duct, 5-in dia.	White plastic duct with adjustable diameter that extends from 6.5 to 10 feet in length
5	Trim Ring, 5-in dia.	Black plastic ring mounts as end caps for extension duct
6	Supply Air Nozzle Adapter Kit, 5-in dia.	Adapter converts airflow from unit to self-supported ducts
8	Self-Supported Duct, 12-in dia.	Gray plastic duct that extends 6.5 to 10 feet in length
8A	Flexible Air Duct, 12-in dia. (not shown)	Wire-reinforced, accordion-style duct in 25-ft length for outdoor heat exchanger (exhaust air or return air). Includes clamp
9	Ceiling Tile, 12-in hole, plastic	24-in x 24-in plastic white tile with 12-in hole for exhaust air self-supported duct
9A	Ceiling Tile Kit, 12-in hole, metal (not shown)	24-in x 24-in sheet metal tile with 12-in hole and built-in flange for exhaust air exhaust air or return air flexible duct
10	Outdoor Heat Exchanger Plenum	Plenum for return air to outdoor heat exchanger
11	Condensate Pump Kit	Pump kit includes 3/8-in diameter x 20-ft length hose. Includes installation hardware. Maximum lift: 20 feet at 115V and 17 feet at 230V
15	Storage Cover	Durable black nylon oxford unit storage cover

Accessory Applications

Auto Condensate Removal

Why bother with emptying the drain tank when you can install a condensate pump to remove the water automatically? This pump has a 17-ft lift capacity to reach virtually any remote drain. With the condensate pump installed, drainage is automatic and access to the compartment is no longer necessary.

#	ACCESSORY	CLIMATE PRO X14 / X20	CLIMATE PRO X26
10	Condensate Pump Kit	484789-0210	484789-0220

Outdoor Heat Exchanger Exhaust Air Removal

To exhaust air above the work area, attach duct to the exhaust air flange on top of the unit. When using MovinCool inside an office, simply replace the ceiling tile with the MovinCool ceiling tile and insert the duct to exhaust the air. No special tools or equipment are required for the installation.

#	ACCESSORY	CLIMATE PRO X14 / X20	CLIMATE PRO X26
8	Self Supported Duct, 12-in dia. ^(a)	LA481744-0410	LA481744-0410
8A	Flexible Air Duct (not shown) ^(b)	LAY45771-0060	LAY45771-0060
9	Ceiling Tile, plastic ^(c)	LA146373-8280	LA146373-8280
9A	Ceiling Tile, metal (not shown) ^(d)	484490-1030	484490-1030

Outdoor Heat Exchanger Air Intake

When balanced airflow is required, attach the outdoor heat exchanger plenum with a duct from the side of the unit to an outside air source. The air to the outdoor heat exchanger is pulled from outside the room to eliminate problems associated with negative air pressure.

#	ACCESSORY	CLIMATE PRO X14 / X20	CLIMATE PRO X26
8	Self Supported Duct, 12-in dia. ^(e)	LA481744-0410	LA481744-0410
8A	Flexible Air Duct (not shown) ^(f)	LAY45771-0060	LAY45771-0060
9	Ceiling Tile, plastic ^(g)	LA146373-8280	LA146373-8280
9A	Ceiling Tile, metal (not shown) ^(h)	484490-1030	484490-1030
10	Outdoor Heat Exchanger Plenum ⁽ⁱ⁾	484350-1160	484350-1180

Remote Cooling

The amount of air supplied to remote areas can be increased by attaching 10-ft extension ducts. Use the flange and clamp to secure the extension ducts to the unit. Each duct can be extended 30 to 60 feet from the unit, depending on the model. Add trim rings to the end of the extension ducts to give a finished look and keep the ducts from unraveling. The dual duct accessory can be used to divide each 5-in nozzle opening into two 4-in outlets to multiply your cooling options.

#	ACCESSORY	CLIMATE PRO X14 / X20	CLIMATE PRO X26
1	Supply Air Flange Kit ^(j)	481170-0450	481170-0450
3	Dual Duct	484209-0500	484209-0500
4	Self-Supported Duct, 5-in dia. ^(k)	481744-0090	481744-0090
5	Trim Ring ^(l)	481851-0200	481851-0200
6	Supply Air Nozzle Adapter Kit ^(m)	481769-0310	481769-0310

Unit Storage

This durable unit cover is perfect for storage and transportation on an open truck. Made of black nylon oxford fabric, this cover is waterproof and mildew- and UV-treated for lasting service.

#	ACCESSORY	CLIMATE PRO X14	CLIMATE PRO X20 / X26
15	Storage Cover	LA484420-0870	LA484420-0880

REQUIRED ACCESSORIES:

- | | | | | |
|--------|---------------|---------------|------------------------------|----------------|
| (a) 9 | (d) 8A | (g) 8 and 10 | (i) (8 and 9) or (8A and 9A) | (k) 1, 5 and 6 |
| (b) 9A | (e) 9 and 10 | (h) 8A and 10 | (j) 4, 5 and 6 | (l) 4 |
| (c) 8 | (f) 9A and 10 | | | (m) 1, 4 and 5 |

NOTE: All part numbers come with one part except where noted. All kits include additional pieces such as clamps and screws. See parts description box for more information.



Climate Pro D Series

Your all-in-one “dual” answer for cooling and heating.

Climate Pro D series heat pumps let you heat or cool for year-round comfort.

Key Features

- Economy and convenience — one affordable unit that provides both heating and cooling.
- Compact footprint for space-limited applications.
- Made with safety in mind — no flammable gas, no hot-to-the-touch surfaces. and no sharp corners.
- Effective moisture removal — hastens drying for humid and water-damaged areas.
- Excellent back-up protection for sensitive electronics.
- Connectivity ready with remote monitoring, geolocation and performance notifications.*

*Subscription required, coming in 2022.



Ideal for ...

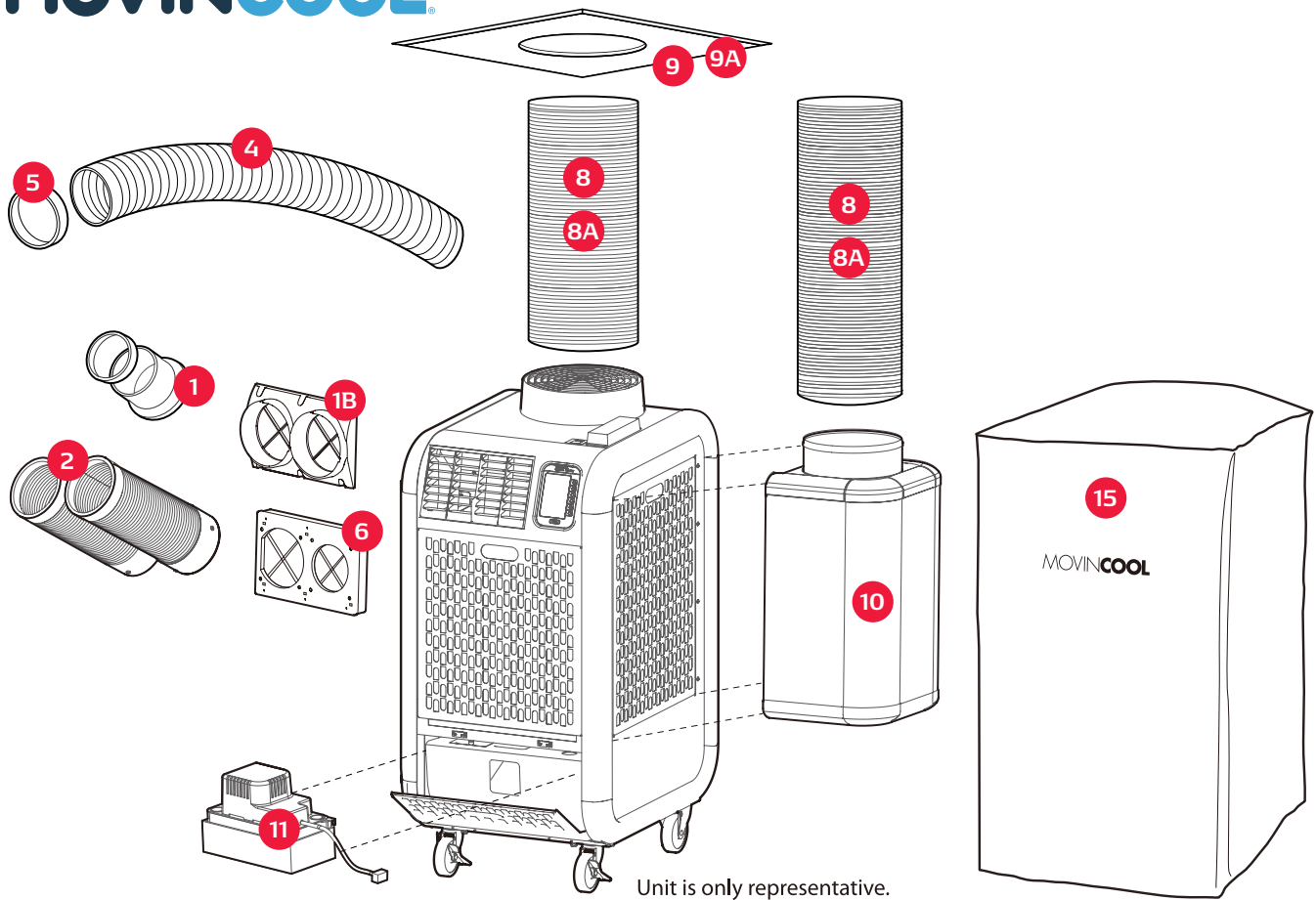
Offices
Conference Rooms
Schools
Hospitals
Retail Spaces
Warehouses
Assembly Lines
Emergency Back-up
Off-season Spot Cooling and Heating
Supplemental Cooling and Heating



Climate Pro D Series Specifications

		D12	D18
Electronic Features	Control Panel	Programmable	Programmable
Cooling/Heating Capacity Rating Conditions:	Cooling: 95°F @ 60% RH Heating: Indoor @ 70°F / Outdoor @ 47°F @ 50% RH	Cooling: 11,450 Btu/h Heating: 9,900 Btu/h	Cooling: 15,500 Btu/h Heating: 13,100 Btu/h
Electrical Characteristics	Voltage Requirement (60 Hz)	1 Phase, 115 V	1 Phase, 115 V
	Total Power Consumption	Cooling: 1.38 kW Heating: 1.25 kW	Cooling: 1.56 kW Heating: 1.31 kW
	Current Consumption	Cooling: 12.1 amps Heating: 13.3 amps	Cooling: 15.1 amps Heating: 15.8 amps
	Recommended Fuse Size	15 amps	20 amps
	NEMA Plug Configuration	5-15P	5-20P
	Min. – Max. Voltage	104 – 127 V	104 – 127 V
Fans	Motor Output	0.055 kW Evaporator	0.055 kW Evaporator
		0.12 kW Condenser	0.12 kW Condenser
Indoor Heat Exchanger (Supply)	Fan Type	Centrifugal	Centrifugal
	Max. Air Flow - High/Mid/Low	420/340/280 CFM	540/440/350 CFM
	Max. External Static Pressure	0.31 IWG	0.31 IWG
Outdoor Heat Exchanger (Exhaust)	Fan Type	Centrifugal	Centrifugal
	Max. Air Flow	760 CFM	825 CFM
	Max. External Static Pressure	0.19 IWG	0.19 IWG
Compressor	Type	Hermetic Rotary	Hermetic Rotary
	Output	0.75 kW	0.9 kW
Refrigerant	Type	R-410A	R-410A
Dimensions	W x D x H	22 x 27 x 47 in	22 x 27 x 51 in
Net Weight/Shipping Weight		181/218 lb	198/236 lb
Power Cord	Gauge	14 AWG (3-core)	12 AWG (3-core)
	Length	10 ft	10 ft
Condensate Tank Capacity		5 gal	5 gal
Operating Conditions	Min. – Max. @ 50% RH	Cooling: 65° – 95°F	Cooling: 65° – 95°F
		Heating: <i>Without Plenum:</i> 40° – 80°F (air entering indoor and outdoor heat exchangers) <i>With Plenum:</i> 40° – 80°F (air entering indoor heat exchanger) 24° – 80°F (air entering outdoor heat exchanger)	Heating: <i>Without Plenum:</i> 40° – 80°F (air entering indoor and outdoor heat exchangers) <i>With Plenum:</i> 40° – 80°F (Air entering indoor heat exchanger) 24° – 80°F (air entering outdoor heat exchanger)
Max. Equivalent Duct Length	Supply Duct Hose	30 ft	25 ft
	Exhaust Duct Hose	100 ft	100 ft
Max. Sound Level	With Condenser Duct - High/Mid/Low	61/60/59 dB(A)	65/64/63 dB(A)
	Without Exhaust Duct - High/Mid/Low	62/61/60 dB(A)	66/65/64 dB(A)

All specifications subject to change without notice. See our website for the latest information. See page 31 for technical features and warranty information.



Unit is only representative.

Climate Pro D12 / D18

#	ACCESSORY	DESCRIPTION
1	Supply Air Flange Kit, 5-in dia.	Black metal flange with wire clamp and mounting screws. Use with self-supported ducts.
1B	Quick Connect Supply Air Flange Kit, 5-in dia.	Black plastic flange with mounting screws. Use with Quick Connect Nozzle Kit.
2	Quick Connect Supply Air Nozzle Kit, 5-in dia.	Gray plastic nozzle that extends up to 2 feet in length. Includes trim ring. Each nozzle sold separately.
4	Self-Supported Duct, 5-in dia.	White plastic duct with adjustable diameter that extends from 6.5 to 10 feet in length.
5	Trim Ring, 5-in dia.	Black plastic ring mounts as end caps for extension duct.
6	Supply Air Nozzle Adapter Kit, 5-in dia.	Adapter converts airflow from louvers to nozzles or air ducts. Two nozzles or extension ducts.
8	Self-Supported Duct, 12-in dia.	Gray plastic duct that extends 6.5 to 10 feet in length.
8A	Flexible Air Duct, 12-in dia. (not shown)	Wire-reinforced, accordion-style duct in 25-ft length for outdoor heat exchanger (exhaust air or return air). Includes clamp.
9	Ceiling Tile, 12-in dia hole, plastic	24-in x 24-in white plastic tile with 12-in hole for exhaust air self-supported duct.
9A	Ceiling Tile Kit, 12-in hole, metal (not shown)	24-in x 24-in sheet metal tile with 12-in hole and built-in flange for exhaust air or return air flexible duct.
10	Outdoor Heat Exchanger Plenum	Plenum for return air to outdoor heat exchanger.
11	Condensate Pump Kit, 115V	Pump kit includes 3/8-in diameter x 20-ft length hose. Includes installation hardware. Maximum lift: 20 feet
15	Storage Cover	Durable black nylon oxford unit storage cover.

Accessory Applications

Auto Condensate Removal

Why bother with emptying the drain tank when you can install a condensate pump to remove the water automatically? This pump has a 17-ft lift capacity to reach virtually any remote drain.

#	ACCESSORY	CLIMATE PRO D12 / D18
11	Condensate Pump Kit	484789-0210

Exhaust Air Removal & Supply Air Intake

MovinCool makes removing exhaust easy. Simply replace the existing ceiling tile with the MovinCool ceiling tile accessory. Place the self-supported or flexible duct on top of the unit and insert it into the ceiling tile. That's all it takes. When balanced airflow is required, attach the outdoor heat exchanger plenum with a duct from the side of the unit to an outside air source. The air to the condenser is pulled from outside the room to eliminate problems associated with negative air pressure.

#	ACCESSORY	CLIMATE PRO D12	CLIMATE PRO D18
8	Self-Supported Duct, 12-in dia. ^(a)	LA481744-0410	LA481744-0410
8A	Flexible Duct Kit, 12-in dia. (not shown) ^(b)	LAY45771-0060	LAY45771-0060
9	Ceiling Tile, plastic ^(c)	LA146373-8280	LA146373-8280
9A	Ceiling Tile, metal (not shown) ^(d)	484490-1030	484490-1030
10	Outdoor Heat Exchanger Plenum ^(e)	484350-1340	484350-1350

Spot or Remote Cooling

To use the Climate Pro D Series models to spot cool or heat specific areas, use the nozzle adapter in place of the standard louvers. Attach supply air extension ducts to the adapter to cool or heat remote spots. Trim rings give a finished look and keep the ducts from unraveling.

#	ACCESSORY	CLIMATE PRO D12 / D18
1	Supply Air Flange Kit * ^(f)	481170-0450
1B	Quick Connect Supply Air Flange Kit * ^(g)	481170-0480
2	Quick Connect Supply Air Nozzle Kit * ^(h)	484209-0480
4	Self-Supported Duct, 5-in. dia. ⁽ⁱ⁾	481744-0090
5	Trim Ring ^(j)	481851-0200
6	Supply Air Nozzle Adapter Kit ^(k)	481769-0280

*Order one or two parts depending if one or two nozzles, flanges or ducts are needed.

Unit Storage

This durable unit cover is perfect for storage and transportation on an open truck. Made of black nylon oxford fabric, this cover is waterproof and mildew- and UV-treated for lasting service.

#	ACCESSORY	CLIMATE PRO D12	CLIMATE PRO D18
15	Storage Cover	LA484420-0840	LAY84420-0690

REQUIRED ACCESSORIES:

^(a) 9 for exhaust air removal and 9 & 10 for supply air intake
^(b) 9A for exhaust air removal and 9A & 10 for supply air intake
^(c) 8 for exhaust air removal and 8 & 10 for supply air intake
^(d) 8A for exhaust air removal and 8A & 10 for supply air intake
^(e) (8 and 9) or (8A and 9A)
^(f) 4, 5 and 6
^(g) 2 and 6
^(h) 1B and 6
⁽ⁱ⁾ 1, 5 and 6
^(j) 4
^(k) (1B and 2) or (1, 4 and 5)

NOTE: All part numbers come with one part except where noted. All kits include additional pieces such as clamps and screws. See parts description box for more information.



Classic Series

The enduring standard in portable cooling for commercial and industrial users.

Durable, reliable, and time-tested since 1982. The Classic Series is a great choice for spot cooling across a wide range of applications.

Key Features

- Units from 10,000 to 60,000 Btu/h — for efficient sizing to your application.
- Flexible duct extends up to 80 ft. — versatile, targeted cooling in hard-to-reach spaces.
- Rugged design and construction — for superior performance in harsh environments.
- Digital temperature controls — for clear and simple operation.
- Safety listed for outdoor use – Classic 40 and 60.
- Handles temperatures up to 115°F



Ideal for . . .

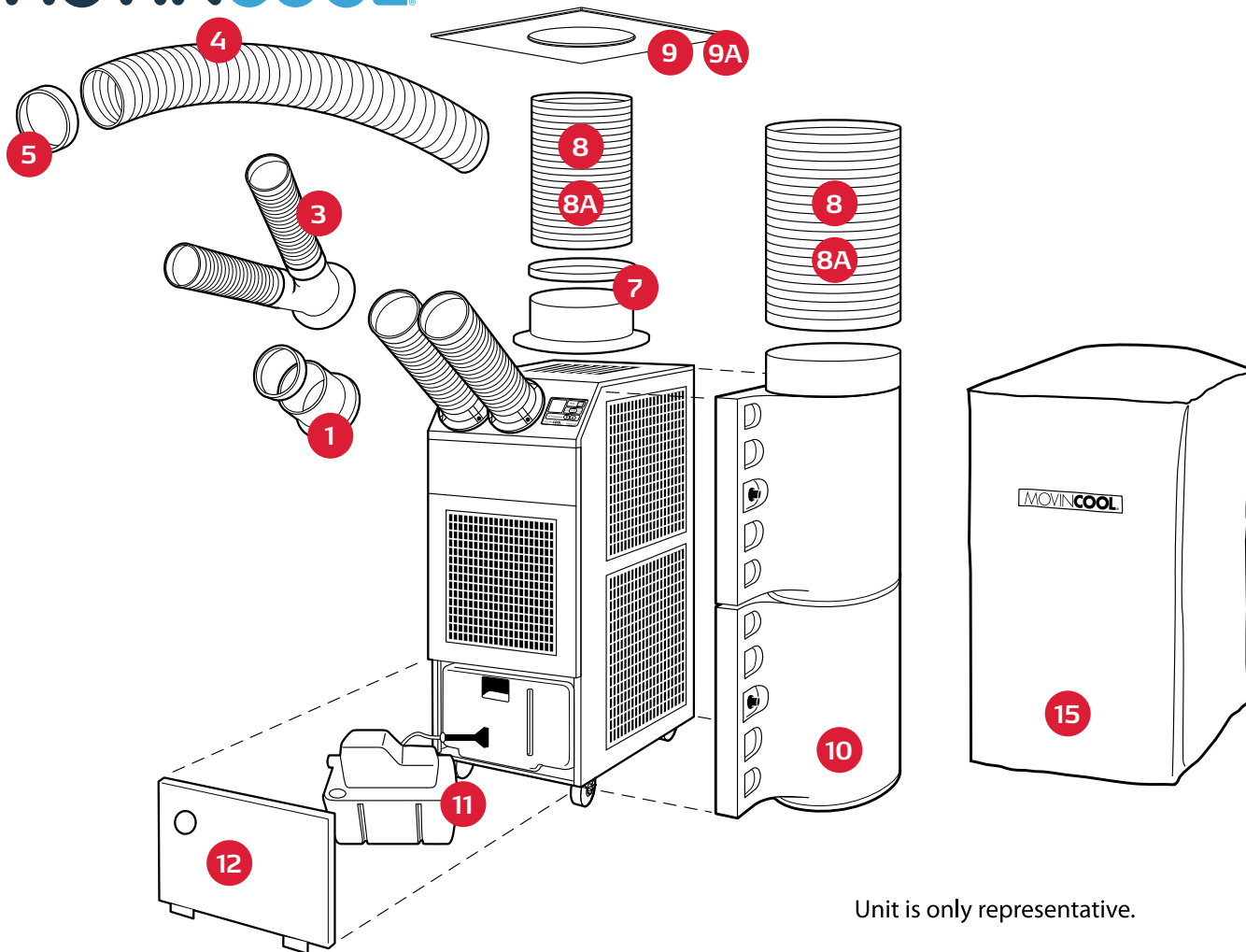
Warehouses
Assembly Lines
Manufacturing Plants
Process Cooling
Moisture Removal
Outdoors and Events



Classic Series Specifications

		Classic 10	Classic 40	Classic 60
Electronic Features	Control Panel	Digital	Digital	Digital
Cooling Capacity	Rating Conditions: 95°F @ 60% RH	10,000 Btu/h	39,000 Btu/h	60,000 Btu/h
Electrical Characteristics	Voltage Requirement (60 Hz)	1 Phase, 115 V	3 Phase, 220 V	3 Phase, 460 V
	Total Power Consumption	1.1 kW	4.2 kW	5.9 kW
	Current Consumption	10 amps	14 amps	8.8 amps
	Recommended Fuse Size	15 amps	25 amps	20 amps
	NEMA Plug Configuration	5-15	L15-30	N/A
	Min. – Max. Voltage	105 – 125 V	198 – 240 V	440 – 480 V
Fans	Motor Output	0.15 kW	0.75 kW Evaporator 0.40 kW Condenser	0.75 kW Evaporator 0.40 kW Condenser
Evaporator	Fan Type	Centrifugal	Centrifugal	Centrifugal
	Max. Air Flow	265 CFM	1060 CFM	1580 CFM
	Max. External Static Pressure	0.33 IWG	1.73 IWG	1.35 IWG
Condenser	Fan Type	Centrifugal	Propeller	Propeller
	Max. Air Flow	740 CFM	2650 CFM	3800 CFM
	Max. External Static Pressure	0.13 IWG	0.05 IWG	0.05 IWG
Compressor	Type	Hermetic Rotary	Hermetic Scroll	Hermetic Scroll
	Output	0.7 kW	2.3 kW	3.89 kW
Refrigerant	Type	R-410A	R-410A	R-410A
Dimensions	W x D x H	19 x 26 x 41 in	26 x 44 x 38 in	32 x 49 x 42 in
Net Weight/Shipping Weight		156/194 lb	344/396 lb	474/566 lb
Power Cord	Gauge	14 AWG (3-core)	12 AWG (4-core)	N/A
	Length	10 ft	6 ft	N/A
Condensate Tank Capacity		5 gal	2 @ 5 gal (Optional)	N/A
Operating Conditions	Min. – Max. @ 50% RH	70° – 105°F	75° – 115°F	75° – 115°F
Max. Duct Length	Per Cold Duct Hose	40 ft	Varies	Varies
	Hot Duct Hose	60 ft	40 ft	40 ft
Max. Sound Level	With Condenser Duct - High/Mid/Low	55 dB(A)	N/A	N/A
	Without Condenser Duct - High/Mid/Low	58 dB(A)	72 dB(A)	72 dB(A)

All specifications subject to change without notice. See our website for the latest information. See page 31 for technical features and warranty information.



Unit is only representative.

Classic 10

#	ACCESSORY	DESCRIPTION
1	Supply Air Flange Kit, 5-in dia.	Metal flange with wire clamp and mounting screws. Use with supply air ducts.
3	Dual Duct, 5-in dia.	White plastic flange with two 4-in nozzles that extend to 2 feet in length
4	Self-Supported Duct, 5-in dia.	White plastic duct that extends from 6.5 to 10 feet in length
5	Trim Ring, 5-in dia.	Black plastic ring mounts as end caps for extension duct
7	Exhaust Air Flange Kit, 12-in dia.	Gray metal flange with wire clamp and mounting screws
8	Self-Supported Duct, 12-in dia.	Gray plastic duct that extends 6.5 to 10 feet in length
8A	Flexible Air Duct, 12-in dia. (not shown)	Wire-reinforced, accordion-style duct in 10-ft length for outdoor heat exchanger (exhaust air or return air). Includes clamp
9	Ceiling Tile, 12-in hole, plastic	24-in x 24-in plastic white tile with 12-in hole for exhaust air self-supported duct
9A	Ceiling Tile Kit, 12-in hole, metal (not shown)	24-in x 24-in sheet metal tile with 12-in hole and built-in flange for exhaust air or return air flexible duct
10	Outdoor Heat Exchanger Plenum	Plenum for return air to outdoor heat exchanger.
11	Condensate Pump Kit, 115V	Pump kit includes 3/8-in diameter x 20-ft length hose. Includes installation hardware Maximum lift: 20 feet
12	Cover Plate	Blue metal plate covers condensate collection area
15	Storage Cover	Durable black nylon oxford unit storage cover

Accessory Applications

Auto Condensate Removal

Why bother with emptying the drain tank when you can install a condensate pump to remove the water automatically? This pump has a 20-ft lift capacity to reach virtually any remote drain. With the condensate pump installed, drainage is automatic and access to the compartment is no longer necessary.

#	ACCESSORY	CLASSIC 10
11	Condensate Pump Kit	LA484789-0121
12	Cover Plate	484009-0480

Outdoor Heat Exchanger Exhaust Air Removal

To exhaust air above the work area, attach the exhaust air flange and duct to the top of the unit. When using MovinCool inside an office, simply replace the ceiling tile with the MovinCool ceiling tile and insert the duct to the exhaust air. No special tools or equipment are required for the installation.

#	ACCESSORY	CLASSIC 10
7	Exhaust Air Flange Kit ^(a)	481170-0191
8	Self Supported Duct, 12-in dia. ^(b)	LA481744-0410
8A	Flexible Air Duct (not shown) ^(c)	LAY45771-0060
9	Ceiling Tile, plastic ^(d)	LA146373-8280
9A	Ceiling Tile, metal (not shown) ^(e)	GX484490-0770

Outdoor Heat Exchanger Air Intake

When balanced airflow is required, attach the heat exchanger plenum with a duct from the side of the unit to an outside air source. The air to the outdoor heat exchanger is pulled from outside the room to eliminate problems associated with negative air pressure.

#	ACCESSORY	CLASSIC 10
8	Self-Supported Duct, 12-in dia. ^(f)	LA481744-0410
8A	Flexible Air Duct (not shown) ^(g)	LAY45771-0060
9	Ceiling Tile, plastic ^(h)	LA146373-8280
9A	Ceiling Tile Kit, metal (not shown) ⁽ⁱ⁾	GX484490-0770
10	Outdoor Heat Exchanger Plenum ^(a)	LAY84270-0040

Remote Cooling

The amount of air supplied to remote areas can be quickly and conveniently increased by attaching 10-ft extension ducts directly over the standard ducts. For more permanent installations, use the flange and clamp to secure the extension ducts to the unit. Each duct can be extended 30 to 60 feet from the unit, depending on the model. Add trim rings to the end of the extension ducts to give a finished look and keep the ducts from unraveling. The dual duct accessory can be used to divide each 5-inch nozzle opening into two 4-in outlets to multiply your cooling options.

#	ACCESSORY	CLASSIC 10
1	Supply Air Flange Kit ^(j)	481170-0180
3	Dual Duct	484209-0030
4	Self-Supported Duct, 5-in dia. ^(k)	481744-0090
5	Trim Ring ^(l)	481851-0200

Unit Storage

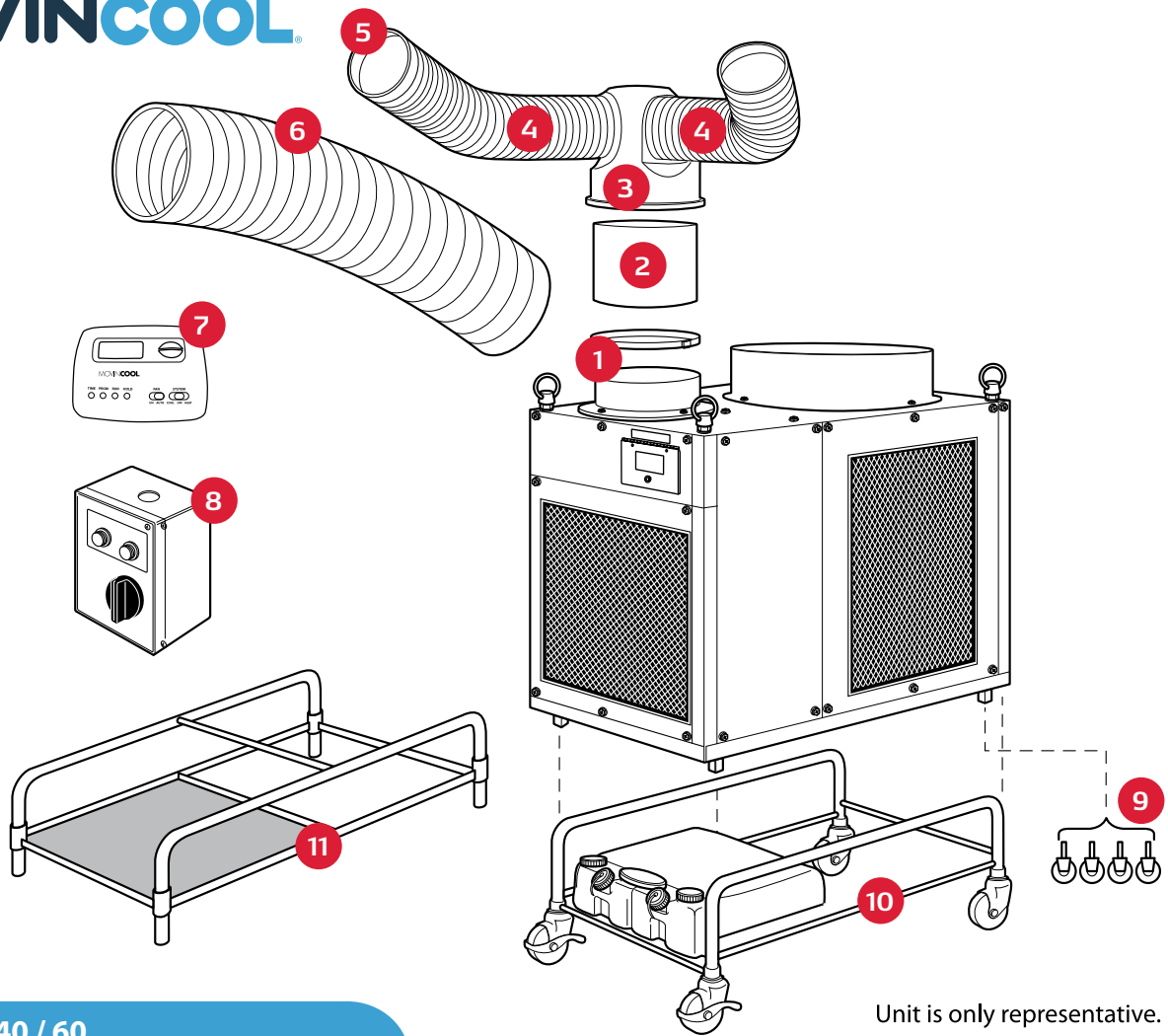
This durable unit cover is perfect for storage and transportation on an open truck. Made of black nylon oxford fabric, this cover is waterproof and mildew- and UV-treated for lasting service.

#	ACCESSORY	CLASSIC 10
15	Storage Cover	LAY84420-0720

REQUIRED ACCESSORIES:

- (a) (8 and 9) or (c) 7 and 9A (f) 9 and 10 (i) 8A and 10 (l) 4
 (8A and 9A) (d) 7 and 8 (g) 9A and 10 (j) 4 and 5
 (b) 7 and 9 (e) 7 and 8A (h) 8 and 10 (k) 1 and 5

NOTE: All part numbers come with one part except where noted. All kits include additional pieces such as clamps and screws. See parts description box for more information.



Unit is only representative.

Classic 40 / 60

#	ACCESSORY	DESCRIPTION
1	Supply Air Flange Kit, 12-in dia.	Gray metal flange with wire clamp and mounting screws
2	Chamber Extender	Gray metal cylinder raises exhaust air chamber 16 inches above unit
2A	Chamber Extender Flange Kit (not shown)	Gray metal flange connects chamber extender to the unit
3	Two-way Chamber	Insulated gray plastic chamber diverts airflow in two directions. Use 6-in extension ducts
3A	Three-way Chamber (not shown)	Insulated gray plastic chamber diverts airflow in three directions. Use 6-in extension ducts.
3B	Reducer Flange Kit (not shown)	Gray metal flange converts mounting holes on Classic 60 for two or three-way chamber and chamber extender flange
4	Self-Supported Duct, 6-in dia.	Adjustable diameter, white plastic duct that extends from 6.5 to 10 feet in length
5	Trim Ring, 6-in dia.	Black plastic ring mounts as end caps for extension duct
6	Self-Supported Duct, 12-in dia.	Gray plastic duct that extends 6.5 to 10 feet in length
6A	Flexible Air Duct, 12-in dia. (not shown)	Wire-reinforced, accordion-style duct in 10-ft length. Includes clamp
7	Wall Thermostat	Weekday and weekend programmable digital millivolt thermostat.
8	Remote Control Kit	Kit includes remote control box and installation hardware. Uses six 18AWG plus one ground wire (wire not included)
9	Caster Kit	Four casters and wrench
10	Wagon Kit	Blue metal, tubular frame with four casters, drain spout assembly and two 5-gal. condensate tanks (Classic 40 only)
11	Stand Kit	Blue metal, tubular frame raises unit off the ground (Classic 40 only)

Accessory Applications

Multiple or Remote Area Cooling

Cooling several hot spots is not a problem with the two- or three-way chamber. Extension ducts in 10-ft sections can be used to bring cooling to remote or different locations. Attach trim rings at the end of the extension ducts to give a finished look and keep the ducts from unraveling.

#	ACCESSORY	CLASSIC 40	CLASSIC 60
1	Supply Air Flange Kit	481170-0191	481170-0191
2	Chamber Extender	481849-1431 ^(a)	481849-1431 ^(b)
2A	Chamber Extender Flange Kit (not shown) *	481170-0091	481170-0091 ^(c)
3	Two-way Chamber	481769-0041	481769-0041 ^(c)
3A	Three-way Chamber (not shown)	481769-0051	481769-0051 ^(c)
3B	Reducer Flange Kit (not shown)	—	481170-0151
4	Self-Supported Duct, 6-in dia. ^(d)	481744-0030	481744-0030
5	Trim Ring ^(e)	481851-0210	481851-0210
6	Self-Supported Duct, 12-in dia. ^(f)	LA481744-0410	LA481744-0410
6A	Flexible Duct Kit (not shown) ^(f)	LAY45771-0060	LAY45771-0060

* Must order in quantities of two for each Chamber Extender used.

Remote Control

When the unit is installed in a remote location, such as outdoors or overhead, use the remote control to allow convenient access to controls. This remote control is a weekday and weekend programmable digital millivolt thermostat.

#	ACCESSORY	CLASSIC 40	CLASSIC 60
7	Wall Thermostat (For models manufactured after 2008)	LA484500-3430	LA484500-3430
8	Remote Control Kit (For models manufactured through 2008)	484500-0431	484500-0431

Portability

To allow portability of these high-capacity MovinCool units, use the caster kit or the wagon kit. The stand kit provides proper ground clearance for permanent exterior installations.

#	ACCESSORY	CLASSIC 40	CLASSIC 60
9	Caster Kit	484709-0011	484709-0020
10	Wagon Kit	484710-0022	—
11	Stand Kit	484750-0021	—

REQUIRED ACCESSORIES:

- ^(a) 2A ^(c) 3B (Classic 60 only) ^(d) 3 (order 2 or 3 ducts depending on chamber selected) ^(e) (3 or 3A) and 4
^(b) 2A and 3B (Classic 60 only) ^(f) 1

NOTE: All part numbers come with one part except where noted. All kits include additional pieces such as clamps and screws. See parts description box for more information.



CM Series Ceiling-mounted Spot Cooling

Space-saving design for overhead installations.

When floor space is limited, the innovative, CM series is the solution. Shortest top-to-bottom profile in the industry — can be installed in virtually any drop ceiling.

Key Features

- Models in two sizes to fit the cooling requirements of your space.
- Environmentally friendly — RoHS compliant.
- Built-in condensate pump — 4 ft. head for sufficient lift to drain line.
- Programmable for automatic operation.
- Great for areas where floor space is limited.
- Self contained system, no refrigerant lines to run.



Ideal for . . .

Offices
Conference rooms
Hotels
Overhead Spot Cooling
Supplemental Cooling
Off-season Spot Cooling
Anywhere space is limited



CM Series Specifications

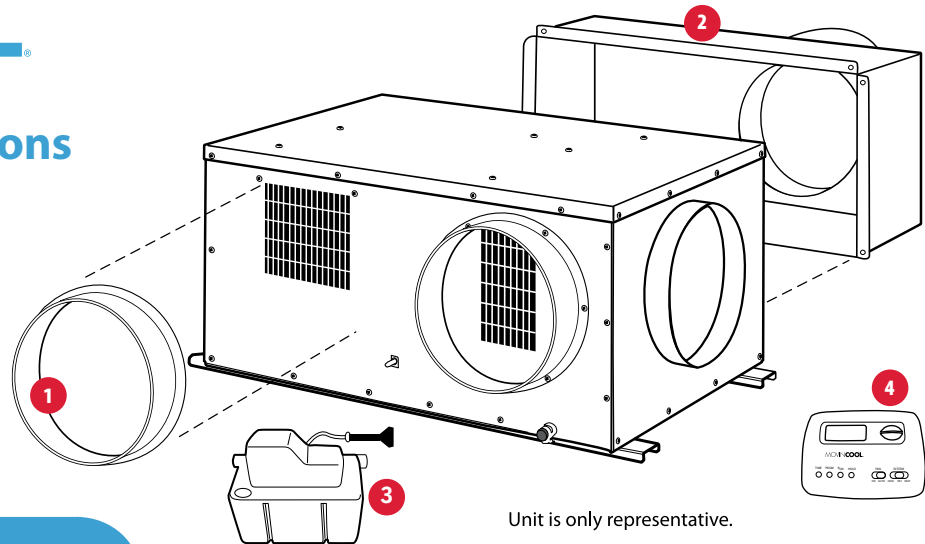
		CM12	CM25
Electronic Features	Operation	Millivolt Thermostat (Not Included)	Wall Mounted Controller
	Control	Electronic	Programmable
Electrical Characteristics	Voltage Requirement (60 Hz)	1 Phase, 115 V	1 Phase, 208/230 V
	Total Power Consumption	1.23 kW ⁽¹⁻²⁾	20 amps
	Current Consumption	11.9 amps ⁽¹⁻²⁾	—
	Recommended Fuse Size	15 amps	198 - 253 V
	NEMA Plug Configuration	N/A	
	Min. – Max. Voltage	105 - 125V	
Cooling Capacity and Power Consumption Evaporator: 80°F @ 50% RH Condenser: 95°F @ 50% RH	Total Cooling Capacity	10,500 Btu/h ⁽¹⁾	25,000 Btu/h ⁽¹⁾
	Sensible Cooling Capacity	7,200 Btu/h ⁽¹⁾	18,000 Btu/h ⁽¹⁾
	Power Consumption	1.23 kW ⁽¹⁾	2.90 kW ⁽¹⁾
	Current Consumption	11.2 amps ⁽¹⁾	12.6 amps ⁽¹⁾
Cooling Capacity and Power Consumption Evaporator: 72°F @ 50%RH Condenser: 95°F @ 50%RH	Total Cooling Capacity	9,300 Btu/h ⁽¹⁾	25,000 Btu/h ⁽¹⁾
	Sensible Cooling Capacity	7,000 Btu/h ⁽¹⁾	18,900 Btu/h ⁽¹⁾
	Power Consumption	1.22 kW ⁽¹⁾	3.20 kW ⁽¹⁾
	Current Consumption	11 amps ⁽¹⁾	15 amps ⁽¹⁾
Fans	Motor Output	0.04/0.013 kW Evaporator 0.1/0.025 kW Condenser	0.21 kW Evaporator 0.35 kW Condenser
Evaporator	Fan Type	Centrifugal	Centrifugal
	Max. Air Flow - High/Low	324/228 CFM ⁽¹⁾	950/800 CFM
	Max. External Static Pressure	0.16 IWG	0.6 IWG
Condenser	Fan Type	Centrifugal	Centrifugal
	Max. Air Flow - High/Low	700/370 CFM	1600/1300 CFM
	Max. External Static Pressure	0.12 IWG	0.5 IWG
Compressor	Type	Hermetic Rotary	Hermetic Swing Inverter
	Output	0.89 kW	1.38 kW @ 60 RPS
Refrigerant	Type	R-410A	R-410A
Dimensions	W x D x H (with Flange)	35 x 23 x 16 in	57 x 36 x 20 in
	W x D x H (without Flange)	32 x 20 x 15.2 in	53 x 32 x 20 in
Net Weight/Shipping Weight		128/141 lb	310/353 lb
Power Cord	Gauge	—	—
	Length	—	—
Condensate Pump Capacity	Pump Rate	5 gal/h	5 gal/h
	Head	4 ft	4 ft.
Operating Conditions	Min. – Max. @ 50% RH	65° – 95°F Evaporator ⁽¹⁾ 65° – 113°F Condenser ⁽¹⁾	60° – 95°F Evaporator ⁽¹⁾ 50° – 113°F Condenser ⁽¹⁾
Max. Duct Length	Per Cold Duct Hose	20 ft ⁽²⁾	120 ft ⁽²⁾
	Hot Duct Hose	10 ft ⁽²⁾	90 ft ⁽²⁾
Max. Sound Level	With Condenser Duct	52 dB(A)	55 dB(A)
	Without Condenser Duct	—	—

⁽¹⁾ Measured with two 6-ft ducts with one 90° bend each, supply grill and return grill with filter (0.16 IWG external static pressure). Ducts not included.

⁽²⁾ Confirm pressure drop of duct, grills and filter with manufacturer's specifications. Ducts not included.

All specifications subject to change without notice. See our website for the latest information. See page 31 for technical features and warranty information.

Accessory Descriptions & Applications



CM 12 / 25		
#	ACCESSORY	DESCRIPTION
1	Exhaust Air Flange Kit, 10-in or 12-in dia.	Gray metal flange with wire clamp and mounting screws.
2	Outdoor Heat Exchanger Plenum, 10-in or 14-in dia.	Gray metal plenum with return air flange. Includes mounting screws.
2	Outdoor Heat Exchanger Filter Kit (not shown)	Optional filter kit for condenser air intake for use in heavily dusty environments.
3	Condensate Pump Kit, 230V	Pump kit includes 3/8-in diameter x 20-ft length hose. Includes installation hardware. Maximum lift: 17 feet
4	Wall Thermostat	Weekday and weekend programmable digital millivolt thermostat.

Auto Condensate Removal (Supplemental)

Condensate pump with 4-ft lift capacity is included with all the units. If more than 4-ft lift capacity is needed, simply add this optional condensate pump kit to boost lift capacity to 17 feet.

#	ACCESSORY	CM 12	CM 25
3	Condensate Pump Kit	—	GX484789-0180

Outdoor Heat Exchanger Air Intake

The plenum can be used to prevent negative air pressure in the ceiling space when using the exhaust air-flange and duct to remove exhaust from the ceiling space. Simply attach a 10-in (CM12) or 14-in (CM25) diameter duct to the air plenum to bring in air from outside of the ceiling space (duct not included).

#	ACCESSORY	CM 12	CM 25
2	Outdoor Heat Exchanger Plenum	481769-0221	481769-0240
2	Outdoor Heat Exchanger Filter Kit (not shown)	—	484409-0130

Outdoor Heat Exchanger Exhaust Air Removal

If removing the exhaust is needed, MovinCool makes it easy. The flange can be used to attach a 10-in (CM12) diameter or 12-in (CM25) diameter duct for more air exhaust options (duct not included).

#	ACCESSORY	CM 12	CM 25
1	Exhaust Air Flange	481170-0440	481170-0191

Wall Thermostat

Weekday and weekend programmable digital millivolt thermostat.

#	ACCESSORY	CM 12	CM 25
4	Wall Thermostat	LA484500-3430	Included*

* Wall-mounted controller with LCD display

MovinCool Quick Reference

MovinCool systems come in different electrical configurations — so you have spot-cooling choices that work for your facility.

By Voltage

1 Phase, 115V	1 Phase, 208/230V	3 Phase, 220V	3 Phase, 460V
Classic 10	Climate Pro K24	Classic 40	Classic 60
Climate Pro D12	Climate Pro K36		Climate Pro K63
Climate Pro D18	Climate Pro K60		
Climate Pro K12	Climate Pro X26		
Climate Pro K18	CM25		
Climate Pro X14			
Climate Pro X20			
CM12			

By Cooling Capacity

Btu/h Cooling	Model
10,000	Classic 10
10,500	CM 12
11,450	Climate Pro D12
12,000	Climate Pro K12
13,200	Climate Pro X14
15,500	Climate Pro D18
16,800	Climate Pro X20
16,800	Climate Pro K18
24,000	Climate Pro X26
24,000	Climate Pro K24
25,000	CM25
39,000	Classic 40
60,000	Classic 60
60,000	Climate Pro K60
60,000	Climate Pro K63

By Heating Capacity

Btu/h Cooling	Model
9,900	Climate Pro D12
13,100	Climate Pro D18

Technical Features

All models feature compressor overload relay and fan motor protection. All models also feature compressor short-cycle protection, return air thermostat, automatic restart and accommodate a condensate pump kit.



Standard and Extended Warranty

All models come with a standard warranty covering the entire unit and compressor for 12 months.

Free Extended Warranty

Visit MovinCool.com/warranty for details on MovinCool's industry-best free Extended Warranty Program which totals three (3) years for both parts and labor on portable units.

MOVINCOOL®

The #1 Spot Cooling Solution

DENSO Products and Services Americas, Inc.
3900 Via Oro Avenue
Long Beach CA 90810 USA
800-264-9573
MovinCool.com

